

# Saltron<sup>®</sup> mini

## Portable Chlorine Generator for Spas

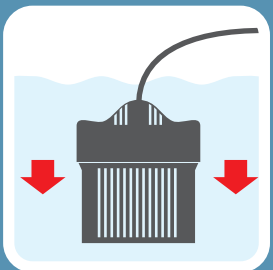


Power Supply  
With Control Panel

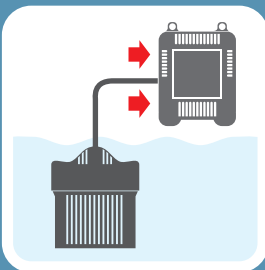
3 easy steps and chlorine is being generated!



Add Salt



Drop cell into  
the water



Connect power  
supply to cell

Saltron<sup>®</sup> MINI Spa Sanitation System produces a pure form of chlorine by electrolysis of salt (NaCl) in order to sanitize your spa water. After the salt is converted to chlorine and the bacteria are killed, the chlorine converts back to salt and this process is ongoing. The salt concentration used is very low (less than that in a human tear). Chlorine output can be easily adjusted by the timer on the power supply unit. The chlorine level in your spa can be checked by using a standard chlorine test kit.

**sölaxx<sup>®</sup>**  
Water Treatment Solutions



# Saltron® mini

## Saltron® Mini Product Advantages

- For any inground or aboveground spa or swim spa up to 2,000 gallons.
- Independent from the spa filter and pump system.
- Reverse polarity keeps cell clean and prevents scaling
- Comes with cell holder which conveniently gives the cell a home while bathing.
- Replaceable cell.
- Easy to set-up and no installation or plumbing required.
- No more purchasing, transportation or storage of chlorine.
- No more skin irritations and itchy red eyes.
- Eco-friendly and very minimal electricity required.
- LED indicator lights illuminate for easy salt level reference.
- Commercial grade titanium cell plates coated with precious metals.
- Switch-mode power supply supplies smooth current to cell resulting in longer lifetime.
- Critical fault protections with automatic shut-down.

## SPECIFICATIONS:

Saltron® MINI Power Supply:  
 Size: For Spas or Swim Spas up to 2000 gallons  
 INPUT: 120VAC, 50/60HZ, 0.33AMP  
           230VAC, 50/60HZ, 0.17AMP  
 OUTPUT: 5.0 VDC, 2.0 Amp  
 Warranty: 1 Year

**solaxx®**  
 Water Treatment Solutions

601 N. Congress Ave.  
 Suite 308  
 Delray Beach, FL 33445  
[www.solaxx.com](http://www.solaxx.com)



Chlorine Cell and Holder